

# Windows Installer Help

## Windows Installer Help


In this page you'll find all the necessary software you need to **install LAMS 2.0.x using the windows installer**. If you want to build LAMS from source, you can follow the instructions in [Building LAMS](#).

### If you already have LAMS 2.0 installed

If you already are running LAMS 2.0.2 and want to upgrade to LAMS 2.0.4, just [download the installer](#) and this will upgrade your installation to 2.0.4.

First it will copy the current LAMS directory to a backup directory on the same disk, so if you are running short of space on that disk the make sure there is enough space for the current LAMS directory + the same size again + some more for temporary installation files + a bit more. So you need to make sure you still have at least 300MB free, on top of your existing LAMS.

### If you are installing 2.0.4 from scratch (you don't have LAMS2.0 installed)

 Before you start installing LAMS, you might find this [animated tutorial](#) useful

Make sure you have the software LAMS needs!

Also, make sure you have enough disk space. You probably need to allow at least 300MB to install LAMS initially (and then you will need more space later for LAMS as any uploaded files will go in the LAMS directory).

### MySQL Database Server

See the [Installing MySQL](#) page. If you are using MySQL as part of an existing XAMPP setup, please read the notes on the [Installing MySQL](#) as you may need to set up a my.ini file before installing LAMS.

### Java SE Development Kit (JDK)

LAMS requires the Sun JDK 5 or 6. See the [Installing Java](#) page for more details.

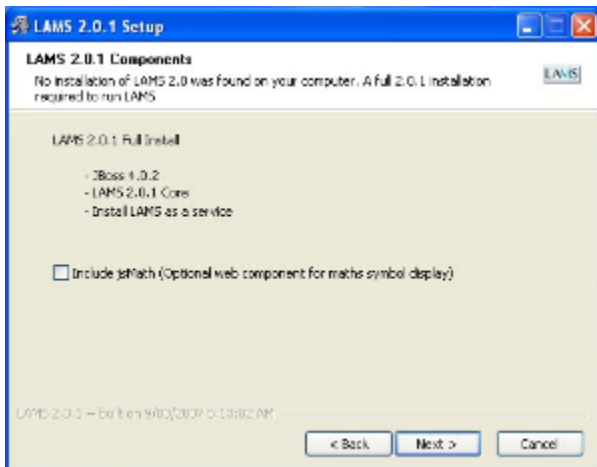
### Wildfire Jabber Server

For our Chat tool, we use the Wildfire Jabber Server. See the [Installing Wildfire](#) page.

### Check that you have the latest LAMS 2 installer

See the [downloads](#) page.

### jsMath

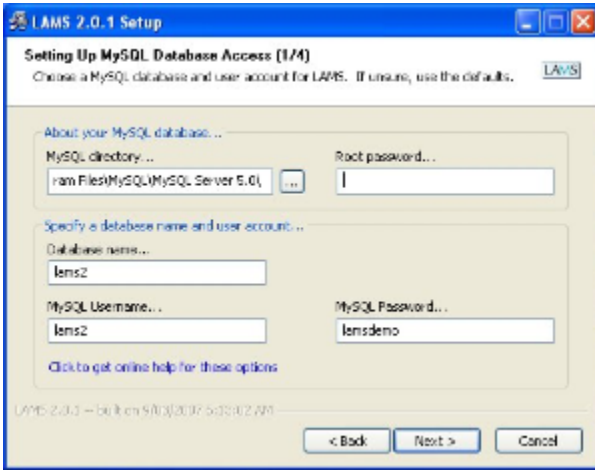


*Click for larger view*

After the license page, the main setup page appears. This will list the components that are being installed or upgraded.

On this screen is the option to install **jsMath**, which is used for entering mathematical formulas in the HTML editor (in authoring). If you turn this on, the jsMath libraries will be installed in the expanded form. In the previous version of the installer you had a choice of compressed or expanded form but we have simplified it in 2.0.1+ to only have the expanded form - which makes LAMS faster to start up.

## Setting Up MySQL Database Access (1/4)



*Click for larger view*

### MySQL directory

Directory where you installed MySQL. It should be detected automatically. If you installed MySQL without the installer, or via a 3rd party package such as EasyPHP or XAMPP, you will need to specify the MySQL directory here.

### Root password

Your MySQL root password. If your password is blank, leave empty.

### Database name

Name that LAMS will use for its database. Don't change unless you need to.

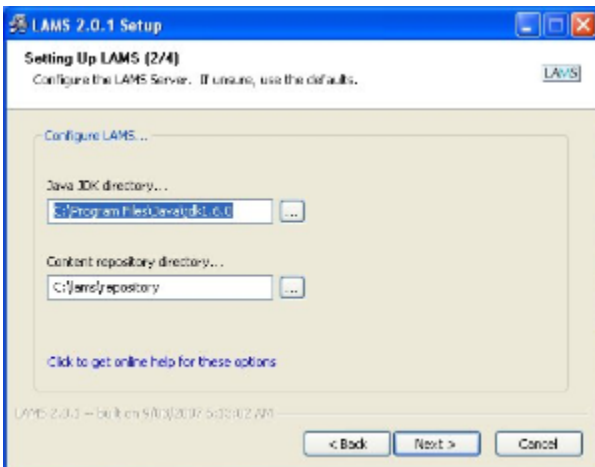
### MySQL Username

Username that LAMS will use to access its database. Don't change unless you need to.

### MySQL Password

Password that LAMS will use to access its database. You don't need to remember this, as it is used automatically by LAMS.

## Setting Up LAMS (2/4)



*Click for larger view*

## Java JDK directory

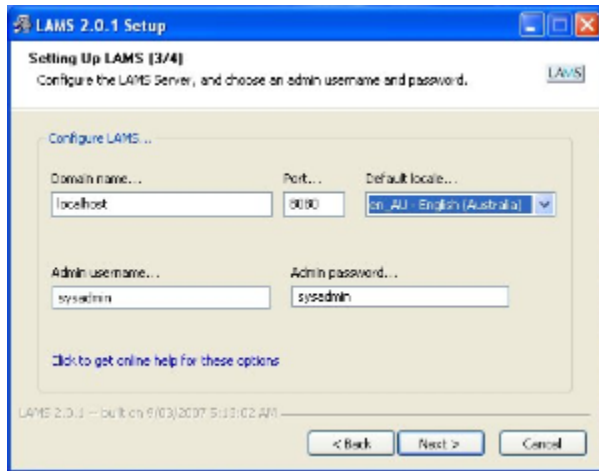
Directory where you installed the JDK that you wish to use with LAMS. It should be detected automatically.

## Content repository directory

Directory where most of the uploaded files will be installed e.g. the online and offline instruction files, plus any files uploading in the Forum or Submit Files tool.

If the disk drive on which LAMS is installed does not have a lot of free space, then change the content repository to another drive. If you do change the location then you will need to make sure you backup both the normal LAMS directory (usually c:\lams) AND the content repository directory.

## Setting Up LAMS (3/4)



*Click for larger view*

### Domain name

The domain name of your LAMS server.

For use on your own PC *only* you can leave the default value of "localhost".

For production/server use, please change to the domain name of your server. If your server has multiple names, use the one by which users will access LAMS.

#### Important

You must access LAMS using <http://servername:portnumber/lams/>. So if you do not get the servername right now, you will need to change it in the database directly later. Once you have LAMS up and running, you can change the servername if you change the name of the server - but you have to be able to log in with the old name to change it to the new name.

### Port

Port that LAMS will run on. Don't change unless you need to.

#### Important

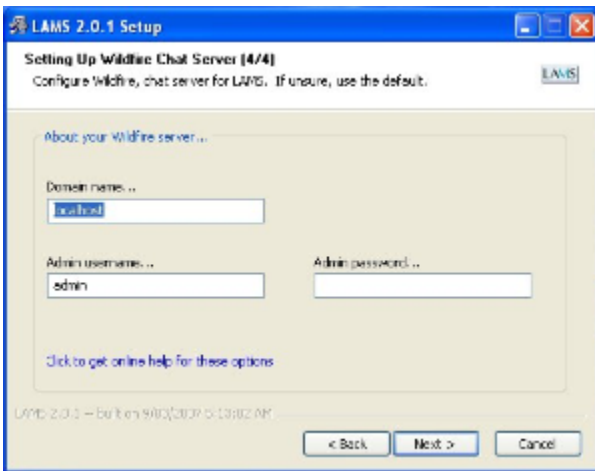
Note that you need to make sure that there's no other application using the port you entered!

For instance if you have another webserver or application that is currently using that port, then LAMS won't be able to start. If you use Skype note that it might be binding port 80! So shutdown skype before you start LAMS.

### Default locale

Choose the default language for your LAMS server.

## Setting Up Wildfire Chat Server (4/4)



*Click for larger view*



#### A note on configuring Wildfire...

If you don't intend to [install Wildfire](#), you don't need to worry about this screen.

#### Domain name

Domain name of your Wildfire server. Should be the same as the one used when Wildfire was configured. If unsure, leave the default.

#### Admin username

Username of the Wildfire administrator - 'admin' by default. Don't change unless you need to.

#### Admin password

Password of the Wildfire administrator. Should be the same as the one used when Wildfire was configured. You don't need to remember this, as it is used automatically by LAMS.

#### Still having problems?



Read the [Troubleshooting Windows Installer Problems](#) page and then post your issues/problems in [this forum](#) in the LAMS Community

If you have just run the LAMS 2.0.x updater to upgrade from LAMS 2.0, and you want to go back to a previous version of LAMS, then these [manual instruction](#) will tell you how to go back to the backup created by the installer.