

lapixl10

Pixlr Activity

To be deprecated

Pixlr tool will be deprecated in LAMS 3.2



Pixlr is a powerful online flash-based image editor that can be included as a LAMS activity. The editor has powerful image creation and editing features, and the interface will be familiar to anyone who has used Paint, or more advanced editors like Photoshop or GIMP.



Haldor Lønningdal of ICT Publish has recently published a whole set of video tutorials on using the advanced features in the actual Pixlr client. You can find them at <http://www.ictpublish.com/pixlr>.



Ernie has created a demo sequence on the LAMS Community showing a Pixlr activity. (You will need an account to preview the sequence) [Click here to view.](#)



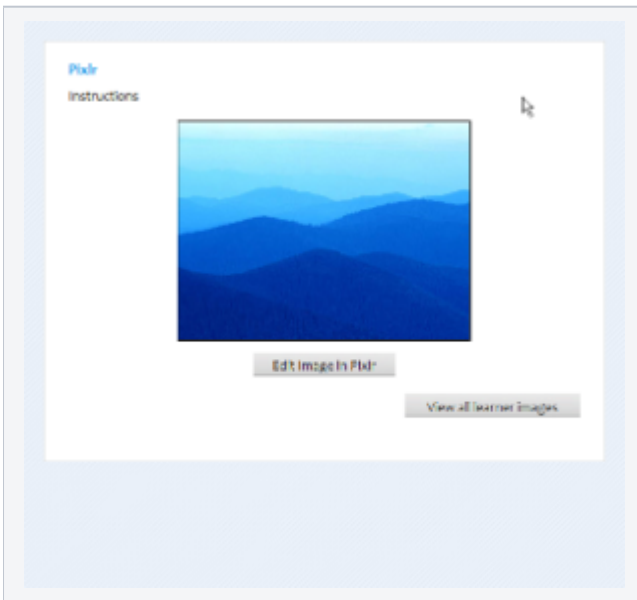
Pixlr functions best with the latest version of Flash - Version 10. [Get it here.](#)



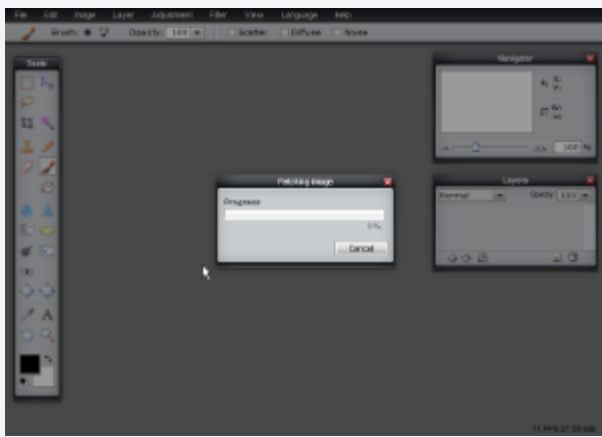
Animated Tutorial

This animation demonstrates Authoring and Learning with a Pixlr activity.

Pixlr Activity Learner's Guide



The first screen displayed in the Pixlr activity shows the image uploaded to the sequence for Learners to edit. Learners click on **Edit Image in Pixlr** to open the image for editing.



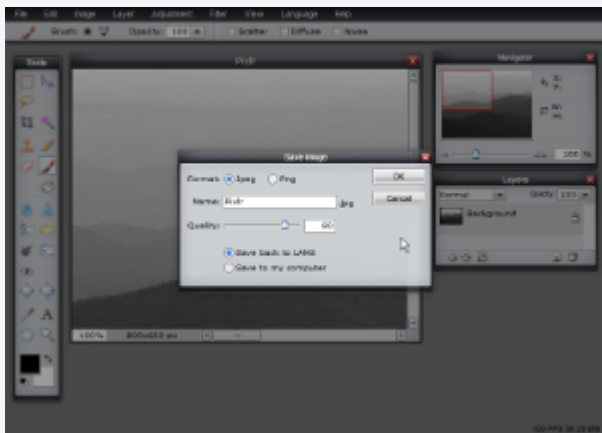
The Pixlr window will open, and the site will automatically fetch the image from LAMS. Learners can make all sorts of changes to the image using the Pixlr tools.



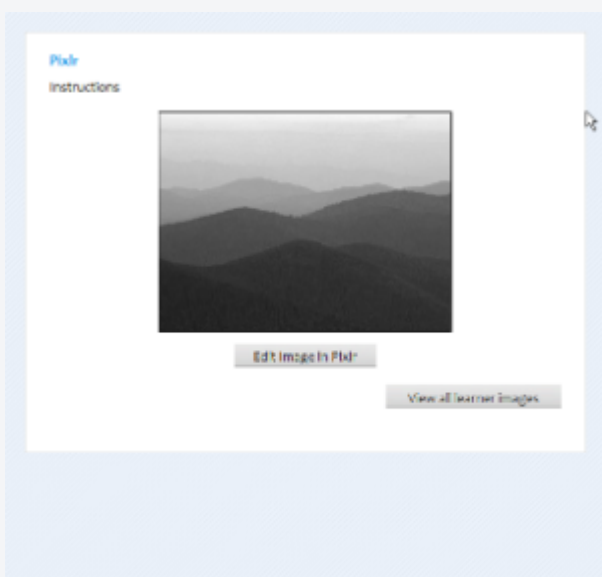
Pixlr Help Guide

Click here to read the Pixlr manual, which describes all the tools and effects available.

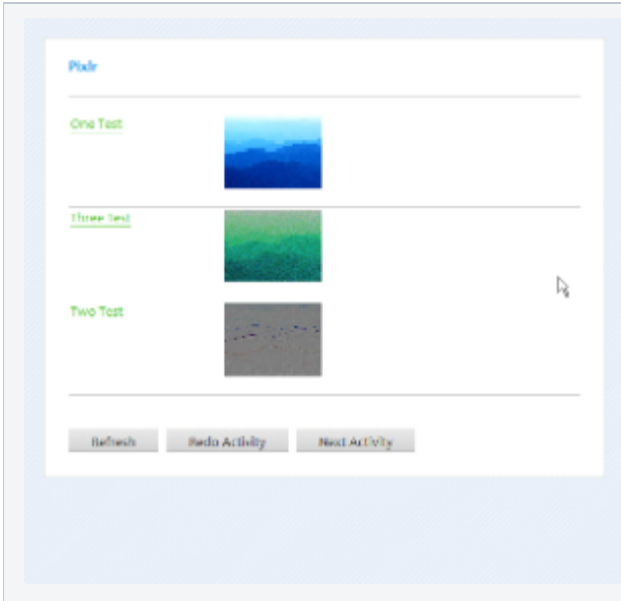
<http://pixlr.com/help>



Once Learners have made their changes, they can click **Save** to send the modified image back to LAMS, or save a copy to their local hard drive.



Back in LAMS, the activity displays a thumbnail of the modified image. Learners can submit this image, open the image in Pixlr again for further editing, or view the submissions from other learners.



Learners can preview responses from other Learners.
 (Where the Pixlr activity is part of a group or branch, only the images from learners on the same group or branch will be displayed.)

Pixlr Activity Authoring

[Basic Tab](#) | [Advanced Tab](#) | [Instructions](#) | [Conditions](#)

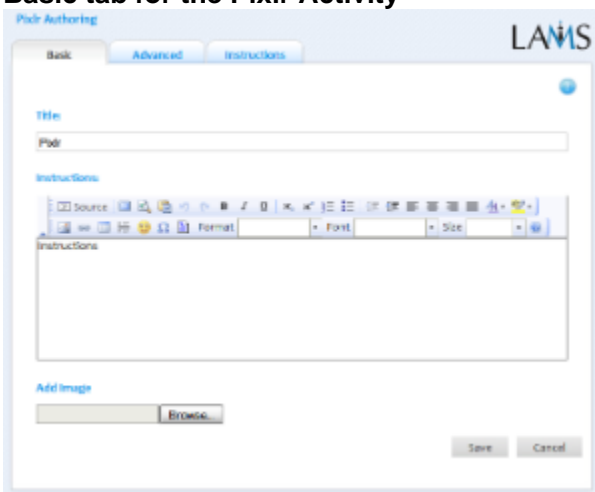
All properties sheets contain three tabs:

- The **Basic** tab controls the content of the activity.
- The **Advanced** tab controls how the activity behaves.
- The **Instructions** tab allows authors to comment on the activity itself.



The basic use case for the Pixlr activity is that the author uploads an image to LAMS which Learners can then modify. When the learners have completed their modified image in Pixlr, they return to LAMS and their image is saved as part of their sequence (the image is also downloaded with the lesson portfolio.) The image can also be made viewable by other learners in the sequence.

Basic tab for the Pixlr Activity



*V
i
e
w of the Pixlr Activity Basic tab.*

There are two features on the basic tab common to all activities:

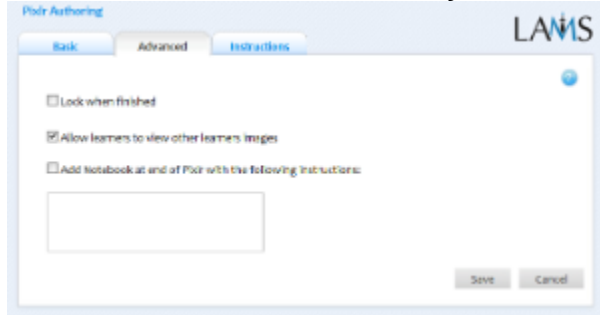
- **Title:** All Activities have a web page title which is presented at the top of the activity page when displayed in the Learning Environment. This is *NO* the same title as the Title that can be set using the [Properties Inspector](#).

- **Instructions:** All Activities have a text area that is presented beneath the title. This is where the main activity text to be displayed to learners is entered. The text can be formatted using the Rich-Text Editor. Image, Video, Audio and URL content can also be displayed in the Instructions area.

Specific Features for the Pixlr Activity

- **Add Image:** The Add Image box allows the sequence author to upload an image for learners to edit.

Advanced tab for the Pixlr Activity



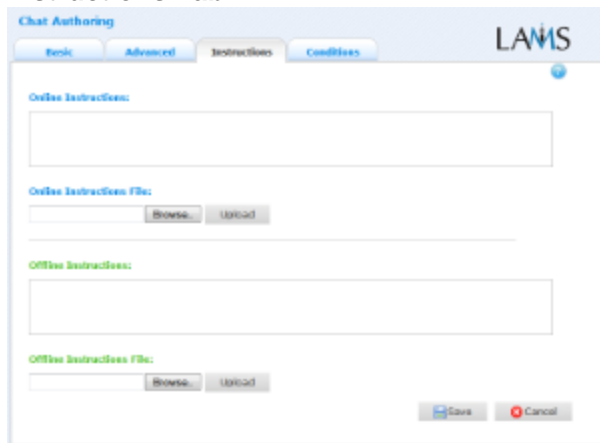
V
i
e
w of the *Pixlr Activity Advanced tab.*

- **Lock when finished:** This option is available on all Activities. Enabling this option in Pixlr means that once a Learner clicks "Next Activity", they will not be able to make further changes to their images. The learner can still return to view the images by selecting the activity from the progress bar. If disabled, learners can return to the activity and make changes for as long as the sequence is available.
- **Add Notebook...** : This option is available on all Activities. Enabling this option creates a Notebook as part of the Activity, which Learner's can use to reflect on the activity just completed. The reflections are personal (ie: not shared with other learners).

Advanced Features Specific to the Pixlr Activity

- **Allow Learners to view other learners images:** When enabled, this option will display the modified images from each learner as part of the activity. Each learner will be able to see the images from other learners in the sequence or group.

Instructions Tab



V
i
e
w of the *Instructions tab. This is the same for all activities.*
The **Instructions** tab contains the same features for all Activities.

It allows the Author to create specific instructions for the activity, as well as upload files that may be useful for running the activity (ie: support documents, etc.). It is a resource that can be used by teachers who are running the sequence for their learners. (In the Monitoring Environment, the Instructions for an Activity can be viewed by double clicking the activity on the *Sequence* tab and then selecting the *Instructions* tab.

The instructions can be retrieved by other authors who open the activity, or by monitors running the sequence.

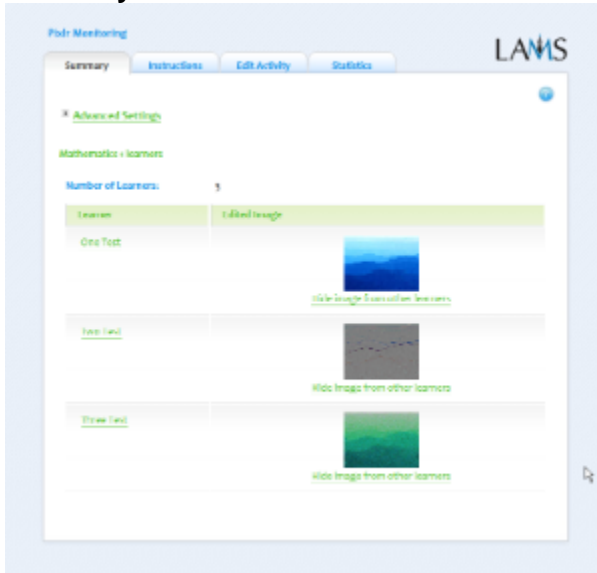
There are two types of Instruction possible, Offline and Online, depending on the mode that the teacher wishes to run the activity. The feature is useful for teachers who are sharing sequences with their colleagues as it provides an area where the Author can describe any learning objectives and/or the specific purpose of the activity.

Branching Conditions Specific to the Pixlr Activity

⚠ The Pixlr Activity does not yet support Output Conditions for Branching.

Monitoring the Pixlr Activity

Summary Tab



Monitoring Summary tab for Pixlr.

Click to expand.

The Pixlr Summary tab will display the Number of Learners who have attempted the activity (where necessary, shown in groups or branches) and a thumbnail of the modified image each Learner has created.

Monitors can click the thumbnail to display the full size image.

Sequence monitors can select **Hide image from other learners** to restrict viewing of individual learner submissions.

Instructions



Monitoring Instructions tab.

Click to expand.

In the Authoring Environment, Authors can use the **Instructions Space** to attach support files for a specific activity, or leave comments for other Monitors about how a given activity should be run.

These comments and files can be viewed from here - the **Instructions Tab**.

Edit Activity

Clicking the **Edit Activity** button opens a new screen identical to the '_Basic_' tab in the authoring environment. From here, Sequence monitors can change the default image for the activity, and modify the activity title and instructions.

Note: if a Learner has accessed the activity, LAMS will display a warning:



Warning: One of more students have accessed this activity. Changing this content will result in students getting different information.

Unlike [Live Edit](#), this form of Editing can only modify the content of an activity, as opposed to the structure of a sequence.

Statistics

The **Pixlr Summary** screen displays a breakdown of the number of learners who have access to the activity, and the number of learners who have completed the activity.